



## ABBYY® FlexiCapture 10

### Server

#### Integrate Capture into your Business

ABBYY FlexiCapture Server is server-based solution for high-volume data capture projects. Integrators and service providers benefit from this powerful platform which delivers high-volume throughput and a full-range of data capture functionalities. Based on a highly scalable and reliable architecture, FlexiCapture Server delivers data capture in environments where a server component perfectly fits in and greater flexibility is needed.

#### Centralised Capture Server

FlexiCapture Server offers intelligent document recognition and accurate data extraction from a full range of document types such as application forms, claim and order documents, invoices, or contracts. Via its Web Services API\* FlexiCapture Server can be connected to various external applications or workflows or integrated into any business application operating as an automatic document classification and data capture service. FlexiCapture Server offers a large variety of customisation options for automatic document classification and separation, data extraction, indexing and allows the integration of external custom modules (e.g. recognition engines) for solving special capture tasks.

#### Single Platform for all Document Types

Intelligent document recognition allows processing of any document type from fixed forms to semi- and unstructured documents in one single system (e.g. for Digital Mailrooms).

#### Independent, Server-based Processing

Recognition, classification and data extraction take place remotely on the server as a background process, working independently not affecting other tasks. Processing can take place unattended without user interaction.

#### Fast and Simple Integration via API

Via its Web Services API a simple integration into business applications or BPM workflow systems can be accomplished. FlexiCapture Server can be easily accessed from several different applications, reducing the licence and implementation costs.

#### Automated Capture and Data Extraction into Backend Applications

FlexiCapture Server offers an integrated data capture workflow, which automates data extraction into backend applications. This speeds up the process when document data gets exported into backend systems.

#### High Quality Data Output

Highly accurate recognition technologies along with rule-based verification and validation methods ensure high quality data output without manual interaction.

#### Handles high Document Volumes

The scalable client-server architecture, parallel processing and Failover Cluster support ensure a high volume throughput and stable processing in business critical environments.

#### Start Smart and Deliver Fast

Auto-learning simplifies creation of documents classifiers and layout descriptions to save time during the implementation phase.

#### Ready for Multinational Business

One solution to process documents in several different languages for faster input into backend applications also from remote offices.

#### Fast Return on Investment

Cost savings due to a reduction of manual labour allows a fast payback of licensing and implementation costs.

#### Key Functionality:

- Intelligent capture server to process any kind of documents in a single stream
- Highly scalable server architecture to ensure high-volume document processing
- Integrated Web-Service API for SOAP access to the FlexiCapture Server
- Auto learning and automatic classification simplify the creation of layouts and shorten the development time
- High availability with Failover Cluster support and Load Balancing
- Tight Integration of custom verification modules via API\*
- Support for 186 OCR languages including Chinese, Japanese, Korean, Thai and Vietnamese and 113 ICR languages
- XML Export with extracted data and all verification and validation errors for external processing
- Scriptable export for connector development to any external application and Microsoft® SharePoint® Export
- PDF- & PDF/A document export for archiving of document images

\* Verification Station Web Service API available in FlexiCapture 10 Release 1, enhanced API planned to be released in a maintenance release of FlexiCapture 10

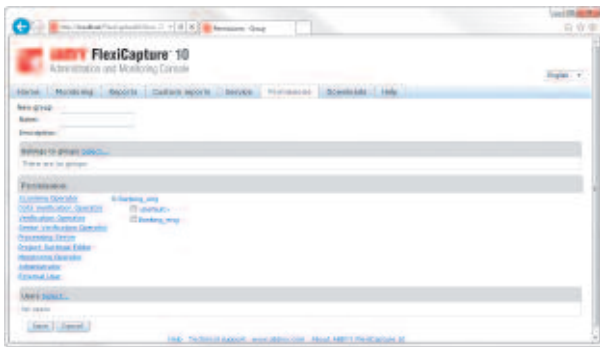
# Functionality Overview



## Setup and Management

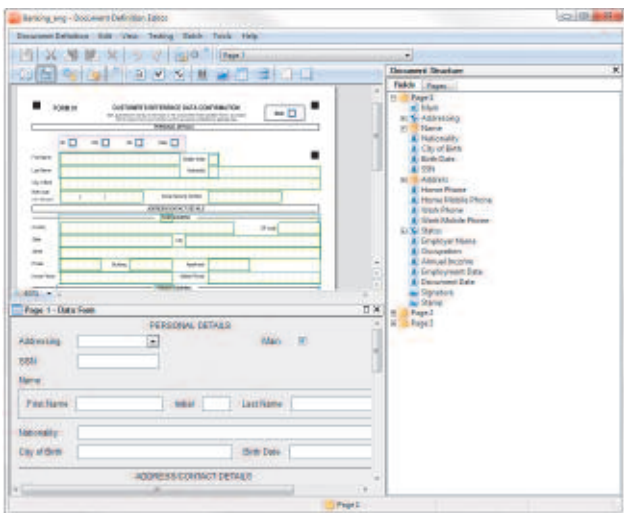
### Administration

System administration and setup are controlled via the Administration and Monitoring console. All system settings including database setup, file storage and user management can be edited via the Web browser. Active Directory import allows to copy users and rights directly into FlexiCapture's user rights management.



### Project Setup and Layout Development

FlexiCapture Server includes design tools for the creation of machine-readable templates for both fixed forms and semi-structured or unstructured documents. Auto learning simplifies the creation of document classifiers and layout descriptions to save time during the implementation phase. A Project Setup Station is used for setting up data capture projects. The Administrator sets up workflows, defines batch types, implements automated validation rules and designs export settings. The Station also provides effective instruments to test, fine tune and adjusts projects.



### Processing Server and Stations

The Processing Server automatically executes all resource-intensive operations such as import, recognition, classification, data extraction, validation rules execution, and export of data and images. The Processing Server has a scalable architecture and distributes tasks among its stations. When adding several stations load balancing helps to boost productivity and enables high-volume throughput.

### Application Server (based on Microsoft® IIS)

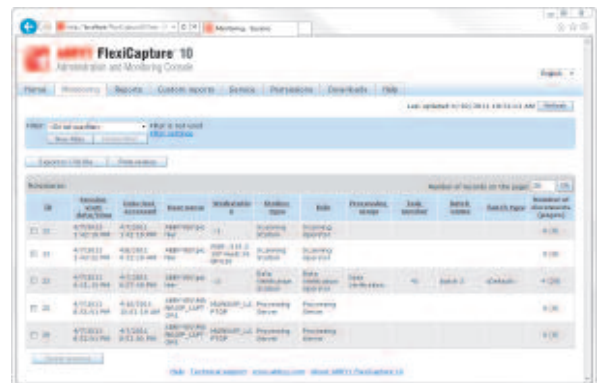
The Application server handles all processing tasks and queues them automatically according to priority and workflow settings.

### Database Server

A Microsoft SQL Server or Oracle Database Server\*\* is needed for processing batches and keeps all data, all processing stages and all information about users, batches, processing operations, and statistics.

### Monitoring and Statistics

The Administration and Monitoring Console can be used for report creation and statistics generation. The station allows administrators to control and view document batches, queues and status. Reports and statistics can also be exported for further analysis. Custom reports allow integration of customised reports designed in Crystal Reports Editor. The Administration and Monitoring Console's web based interface makes it easy to access and use the reports from a web browser.



## FlexiCapture Server Integration

### Web Service API

FlexiCapture Server can be fed from external client applications via a Web Service API\*. Processing documents using a Web Service API integration may work as follows:

- Step 1** – Load a mix of documents from a folder, scanner or other input devices into a pre-configured project using the SOA protocol.
- Step 2** – Document batches are processed on the server; processing can be highly automated depending on the project settings and input files.
- Step 3** – Tasks or documents can be passed to a custom verification module for external validation, validated documents can be sent back to server for further processing.
- Step 4** – Recognition results are exported to the external application as XML filed and document images. Extracted data can be sent to any backend application for further processing.

\* Verification Station Web Service API available in FlexiCapture 10 Release 1, enhanced API planned to be released in a maintenance release of FlexiCapture 10  
\*\* Oracle Database support still under development, planned to be released in a maintenance release of FlexiCapture 10.



# Functionality Overview

## Document Processing with FlexiCapture Server

### Document Import

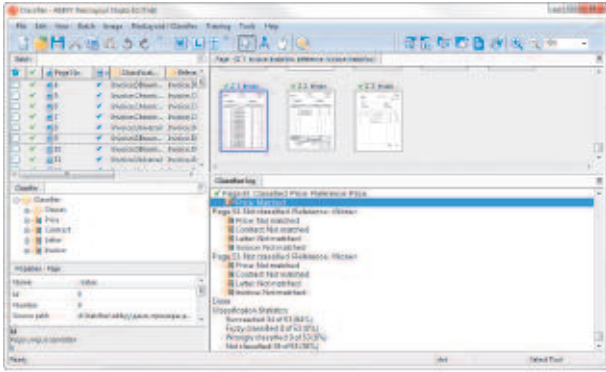
Scanning interfaces for TWAIN and ISIS, Hot-Folder import with auto-checking functionality and scan and import profiles automate import processes for optimised document and data input into the application.

### Recognition of OCR, ICR, Checkmarks and Barcodes

FlexiCapture is based on ABBYY's award-winning recognition technologies delivering unprecedented accuracy and stability in several languages for OCR and ICR. 1D and 2D barcodes and checkmarks can be recognised and powerful image pre-processing functions help to improve recognition quality.

### Automatic and Trainable Document Classification

Built in rule-based classifiers speed up the document template matching, allowing for automatic classification of various document types. Automatic and trainable classifiers allow to train FlexiCapture on document images to identify documents of each class automatically.



### Automated Document Separation and Indexing

Simple document separation via blank pages and barcodes can be implemented in FlexiCapture Server. Intelligent separation via multi-page document definitions enable processing of different document types in one single stream.

### Automated Data Validation

Built-in validation rules are automatically applied during recognition to increase accuracy. This guarantees high data quality and reduces the workload for subsequent verification. Auto correction can be implemented for automatic replacement or modification of data.

### Intelligent Technology to Process Multipage Documents with Long Tables

FlexiCapture is able to process all kinds of forms and business documents like invoices, price lists or contracts. With FlexiCapture businesses get a unique technology to easily process multiple page documents with long tables that stretch over more than one page.

### Scriptable Export to any Business Application

Scriptable export gives developers the ability to create custom export modules that deliver data and/or documents images directly to any external applications such as ECM, CRM, or ERP systems.

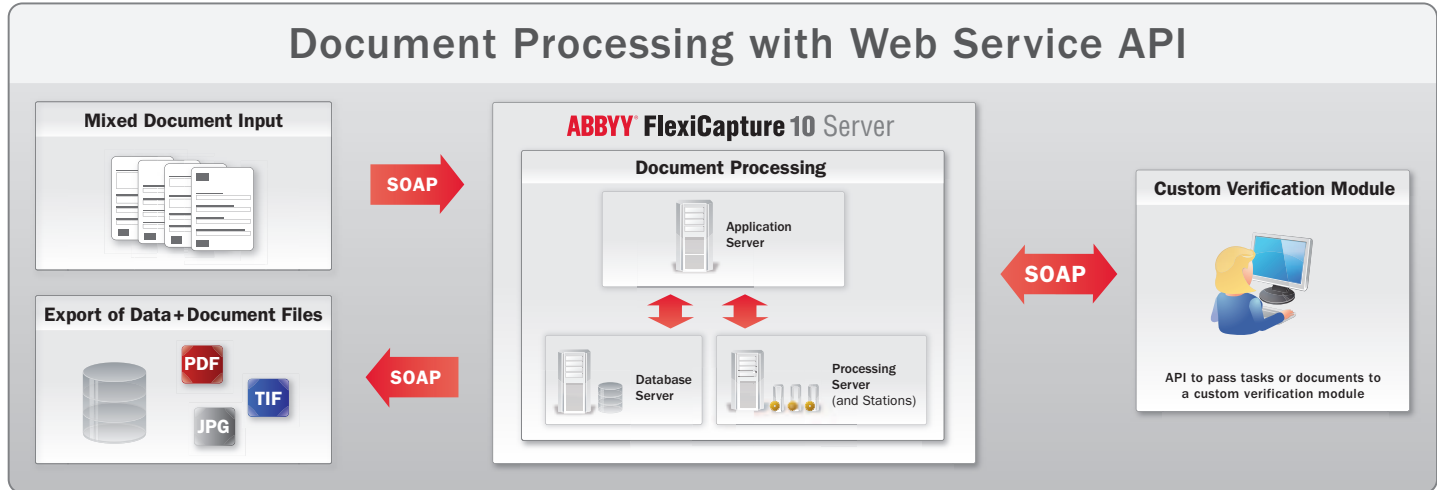
### Data Export

Data can be exported to backend applications, databases or can be stored in enterprise repositories. Powerful export features include automated export or export to multiple destinations. FlexiCapture Distributed supports the following export destinations:

- Files (most common file formats supported)
- XML (Basic and Advanced XML export)
- External databases (via ODBC)
- Microsoft SharePoint
- ERP, DMS, CMS and other business applications

### Document Export for Archiving

Documents can be exported in various image formats. Documents can be prepared for archiving when converting them to Searchable PDF/PDF-A and postponed deletion allows to delete documents only after the data is captured and transferred in the relevant business applications.



# Specifications and Licensing

## Specifications

### System requirements

- **PC:** Intel® Core™2 Duo/2 Quad Pentium® /Celeron® /Xeon™, AMD K6/Turion™ /Athlon™/Duron™ Sempron™ 2 GHz processor or faster. Dual Core (or more) CPU for Application Server
- **RAM for stations:**  
512 MB RAM for each CPU Core, not less than 1 GB
- **RAM for servers:**  
2 GB RAM for each CPU core, 4 GB for intensive processing, 2 GB for MS SQL Server
- **Operating systems:**  
**For Servers:**  
Windows® Server 2003 SP2  
Windows® Server 2008 SP2  
Windows® Server 2008 R2  
**For stations:**  
Windows® XP SP3, Windows® Vista® SP2, Windows® 7

### Required external components

- Microsoft® .Net Framework 2.0 or higher
- Internet Information Server version 6, 7 or 7.5
- Crystal Reports® Basic Runtime for Visual Studio 2008 and 2010 x86 and x64
- Microsoft® SQL Server 2005, 2008 or 2008 R2
- Adobe® Acrobat Reader 9

### Input formats

BMP, PCX, JPEG, JPEG 2000, PNG, TIFF, DjVu, DCX, PDFs (including PDF/A)

### Recognition languages

Please check [www.ABBYY.com](http://www.ABBYY.com) for a full language list.

- **OCR:** 186 languages, 42 with dictionary support
- **ICR:** 113 languages
- **OMR:** Checkboxes, non-framed checkboxes, bubbles
- **Barcodes:** 1D-Barcodes including EAN, Check, IATA, UCC and UPC and 2D Barcodes including PDF417, AZTEC and Data Matrix

### Data export formats

- XLS, DBF, CSV, TXT
- Basic and advanced XML export
- Database export via ODBC
- Export to Microsoft® SharePoint 2010
- Export to backend applications via custom export scripts
- Connectors

### Image export/saving format:

- BMP, PCX, PNG, JPEG, JPEG 2000, and TIFF
- Export for archiving to PDF and PDF/A

## ABBYY FlexiCapture 10 Server Licensing

ABBYY FlexiCapture is sold through a network of Certified Solution Partners. The product's flexible licensing scheme allows partners to select the best pricing option for their specific project. Licensing is offered as:

### Pages per Year Licences (PPY)

FlexiCapture Server is available on a PPY licensing model. PPY describes the amount of pages, which can be processed during a one year timeframe. Processing speed is **not limited**. Multiple processing stations and cores are allowed, which allows high-performance data capture in your enterprise.

### Total Page Count Licenses (TPC)

TPC project licences can be obtained as an add-on to a FlexiCapture Server PPY or CPU licence. TPC describes the amount of pages, which can be processed in total. Processing power is no limited when licensing on a TPC licence scheme. An installed FlexiCapture Server PPY or CPU licence is a prerequisite.

### Page-unlimited (CPU Licences)

FlexiCapture Server is also available via a CPU-based licence scheme. The number of documents and number of pages is restricted by the number of licensed CPU cores – this scheme is ideal for an ongoing data capture backend system.

### Add-on modules

Add-on modules like PDF-export, additional language support for CJK, Thai and Vietnamese or data export connectors to industry-leading backend applications are available as add-ons.

## ABBYY Maintenance and Support

Purchase of Maintenance and Support is mandatory when obtaining a FlexiCapture licence. Maintenance and Support allows customers to retrieve updates, upgrade to the next version of FlexiCapture and also gives a customer access to the ABBYY Technical Support. Maintenance needs to be purchased in yearly increments. Details are outlined in the ABBYY Maintenance and Support policy.

## ABBYY Professional Services

ABBYY offers professional services to help partners jump-start their projects or provide additional expertise and support. Services include the creation of FlexiCapture document definitions, FlexiLayout development.

## ABBYY FlexiCapture Certification and Training

To ensure the success of your projects, ABBYY offers additional training and certification programs for the FlexiCapture platform. Certification training courses are offered regularly, please see regional ABBYY websites for training schedules.

# ABBYY®

### ABBYY Europe GmbH

Elsenheimerstrasse 49  
80687 Munich, Germany  
Tel: +49 89 511 159 0  
Fax: +49 89 511 159 59  
[sales\\_eu@abbyy.com](mailto:sales_eu@abbyy.com)  
[www.abbyy.com](http://www.abbyy.com)  
[www.abbyy.de](http://www.abbyy.de)

Bureau France  
33 avenue Philippe Auguste  
75011 Paris, France  
[sales\\_france@abbyy.com](mailto:sales_france@abbyy.com)  
[www.france.abbyy.com](http://www.france.abbyy.com)

### ABBYY UK Ltd.

Abbey House, Grenville Place  
Bracknell RG12 1BP, United Kingdom  
Tel: +44 1344 392 610  
Fax: +44 1344 392 611  
[sales\\_UK@abbyy.com](mailto:sales_UK@abbyy.com)