

## ABBYY® FlexiCapture 10

### Distributed



#### Enterprise Capture with FlexiCapture 10

ABBYY FlexiCapture Distributed is an Enterprise Capture platform with which multinational organisations can automate their document-driven business processes. With FlexiCapture enterprises streamline the transformation of documents into electronic data for delivery into backend business processes. It replaces manual and expensive data entry by providing intelligent and accurate data extraction from a full range of document types such as application forms, claim and order documents, invoices, or contracts. With its enterprise scalability organisations can handle nearly any volume and automatically classify, separate and extract data into backend applications to increase responsiveness and keep up with today's requirements for ever-increasing transaction speeds.

#### Moving paper at the Speed of Business

Wherever businesses deal with documents and whenever those documents drive transactions, organisations will benefit from automating those processes through reduced operating costs, increased productivity and speed, faster customer service and a reduced risk of compliance failure. FlexiCapture Distributed is a highly customisable platform offering a full-range of functionalities for automatic document classification and separation, data extraction, indexing and it allows the integration of external custom modules for vertical or horizontal solution development.

#### Single Platform for all Document Types

Intelligent document recognition allows processing of any document type from fixed forms to semi- and unstructured documents in one single system (e.g. for Digital Mailrooms).

#### High Quality Data Output

Highly accurate and intelligent document recognition technologies ensure optimised and validated data output.

#### Highly Automated Data Capture

Automated data extraction for highly time efficient data capture speeds up the capture process across an enterprise and makes business-critical information available in a short timeframe.

#### Ready for Multinational Business

One solution to process documents in several different languages for faster input into backend applications also from remote offices.

#### Integrate with any Business Application

Custom module integration to meet the needs of enterprises operating in vertical industry sectors.

#### Handles High Document Volumes

The scalable client-server architecture, parallel processing and failover cluster support guarantee a high volume throughput and stable processing in business critical environments.

#### Start Smart and Deliver Fast

Auto-learning simplifies the creation of documents classifier and layout descriptions to save time during the implementation phase.

#### Better Competitiveness

Fast data extraction, higher data quality and better productivity increase responsiveness in the customer service of an enterprise helping to gear their competitiveness.

#### Reduce Operating Costs

Streamlining business processes and reduction of operational costs for manual indexing, document separation and data extraction.

#### Fast Return on Investment

Cost savings due to a reduction of manual labour allows a fast payback of licensing and implementation costs.

#### Key features:

- Intelligent Enterprise Capture platform for processing any kind of document in one stream
- Integration of Custom Modules e.g. third-party engines for partner-enabled vertical and horizontal solution development
- Web-based stations for scanning\*, data verification and verification\* allow better integration of remote workforces
- Custom processing stages allow creation of customisable workflows depending on business requirements and/or document types
- Auto learning and automatic classification simplify the creation of layouts and shorten the development time
- Double Verification and Distributed Verification\* for increased data quality
- High availability with Failover Cluster support and Load Balancing
- Support for 186 OCR languages including Chinese, Japanese, Korean, Thai and Vietnamese and 113 languages for ICR
- Web-based reports with custom report integration and enhanced statistics
- Export connectors to various backend application and custom export scripts to connect any third-party backend
- Microsoft® SharePoint® Export
- PDF- & PDF/A document export for archiving
- Web Services API\*\*

\* This feature is still under development, planned to be released in a maintenance release of FlexiCapture 10.

\*\* Verification Station Web Service API available in FlexiCapture 10 Release 1, enhanced API planned to be released in a maintenance release of FlexiCapture 10

# Functionality Overview



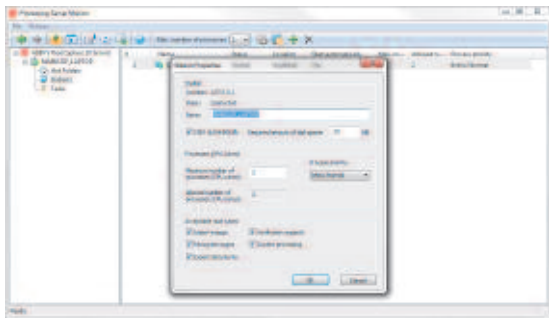
## Working with FlexiCapture Distributed

ABBYY FlexiCapture Distributed delivers high performance enterprise capture functionality via a highly scalable, client-server architecture handling nearly any volume. It includes a set of dedicated server components for data processing and multiple client operator stations for each step in the capture process: setup, administration, scanning, verification, export and monitoring. FlexiCapture also meets the requirements of multinational enterprises by providing powerful tools for remote as well as web-based GUI for scanning\*, data verification and verification\*.

### Server Components

#### Processing Server and Processing Stations

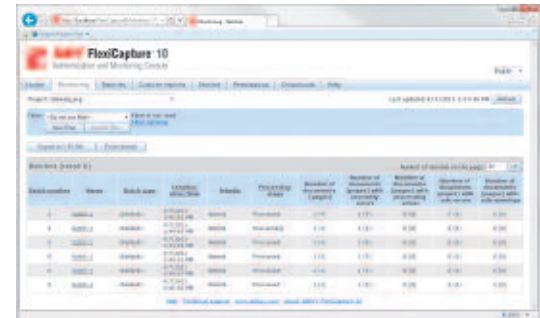
Automatically execute all resource-intensive operations such as image import, recognition, classification, data extraction, validation rules execution, and export. The Processing Server has a highly scalable architecture and distributes tasks among its Processing Stations. When adding several stations, load balancing helps to boost productivity and Failover Cluster support ensures high availability.



### Administration and Setup

#### Administration and Monitoring Console

Administrators and operators can manage processing and track statistics using the Administration and Monitoring Console. Administrators can manage user rights, system administration and setup. Operators can track jobs or generate statistics, control and view document batches, queues, and their status. Custom reports based on Crystal reports can be integrated to generate individual statistics.



#### Database Server

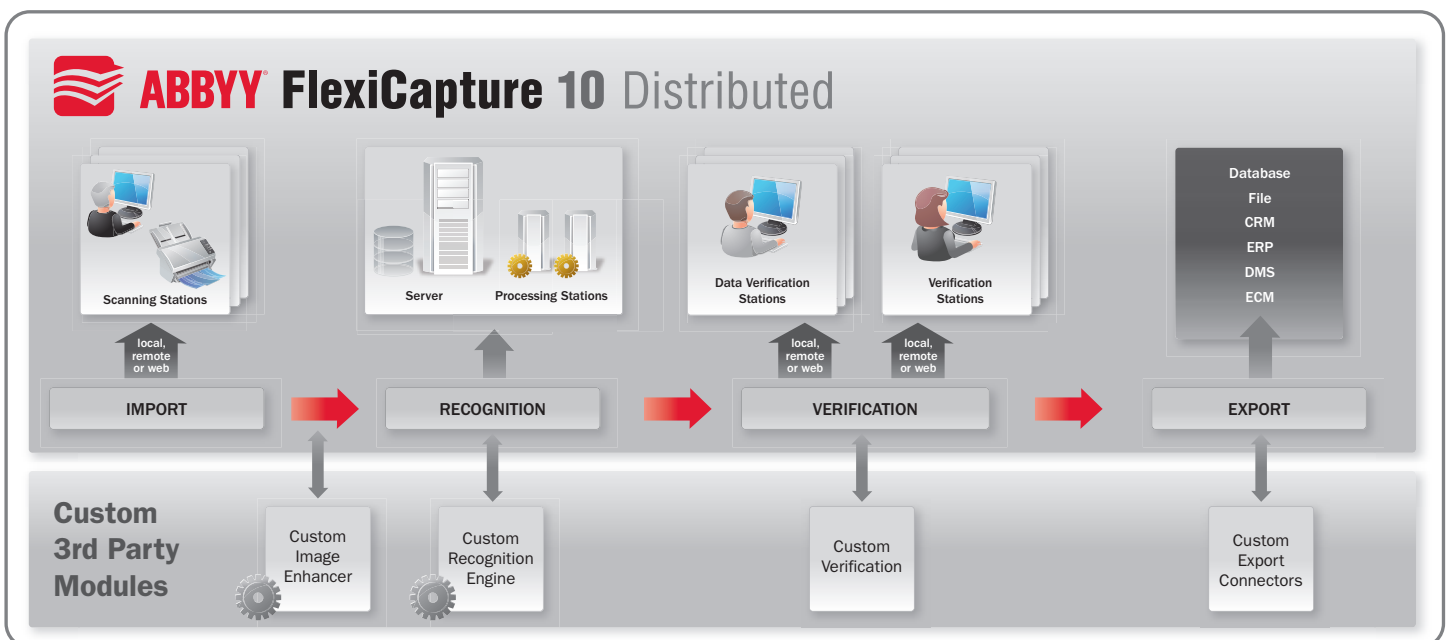
A Microsoft SQL Server or Oracle Database Server\*\*\* keeps all data and about processing stages, and stores all information about users, batches, processing operations, and statistics.

#### Layout Development and Project Setup

FlexiCapture comes with a range of tools for template development. ABBYY Document Definition Editor is used for creation of machine-readable fixed forms. With ABBYY FlexiLayout Studio, FlexiLayouts for semi-structured and unstructured documents like invoices or contracts can be developed. Data capture projects are set up with the ABBYY Project Setup Station which also provides convenient instruments to test, fine tune and adjust projects quickly and easily.

#### Application Server (based on Microsoft® IIS)

The Application server handles all processing tasks and queues automatically and distributes them among the stations.



# Functionality Overview

## Document Processing with FlexiCapture Distributed

ABBYY FlexiCapture Distributed features intelligent document recognition technologies for classification, separation, data extraction, and indexing. Customers can select and deploy user-attended client operator stations for (re-)scanning, data verification and document verification. A highly customisable workflow with custom processing stages makes it easy to manage the processing and verification step and configures the level of automatic or manual intervention desired. FlexiCapture allows integration of custom modules for recognition and classification and gives customers the opportunity to integrate third-party verification modules.

### (Remote) Scanning and Image Import

Batch scanning, scanner management, and image quality control can be handled by the Scanning Station. Click-once installation allows easy distribution and remote usage of the Scanning Station. Enterprises may also use 3rd-party scanning applications as FlexiCapture supports Hot-Folder or email data capture to automate import.

### OCR, ICR, Checkmark and Barcode Recognition

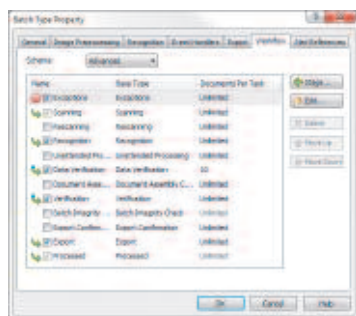
FlexiCapture is based on ABBYY's award-winning recognition technologies delivering unprecedented accuracy and stability in several languages for OCR and ICR. 1D and 2D Barcodes and checkmarks can be recognised and powerful image pre-processing algorithms help to improve recognition quality.

### Automated Data Validation

Built-in validation rules are automatically applied during recognition to increase accuracy. Automatic data validation ensures high data quality and reduces the workload for subsequent verification.

### Customisable Workflows

Custom processing stages can be added to a workflow to set up an individual capture workflow. Enterprises can now adapt company internal workflow requirements to the capture platform or simply create new individual workflows depending on business requirements or document types.



### Classification, Document Separation, and Indexing

Simple document separation via blank pages and barcodes can be implemented in FlexiCapture Distributed. Intelligent separation via multi page document definitions enables processing of different document types in a single stream. Automated and trainable classifiers speed-up the document template development.

### (Web-based) Data Verification

Data verification operators execute low-level verification tasks to match extracted data with original document data. Data verification can be carried out on group- and field-level to correct form errors. Remote offices or outsourcing service providers can be integrated into the capture process via a web-based interface for data verification, which operates completely within a web browser (using Microsoft Silverlight®).



### Verification Station \*\*

Complex document errors can be manually checked using the Verification Station. Master verification operators can check for assembly errors for document composition and rules validation for data correctness. They can also manually re-assemble documents containing classification and assembling errors. An intuitive drag-and-drop interface simplifies this process.

The Verification Station's look and feel can be tailored to the needs of a verification operator, which allows ergonomic keying and improved validation through verification operators

### Data Export

Data can be exported to backend applications, databases or can be stored in enterprise repositories. Powerful export features include automated export or export to multiple destinations. FlexiCapture Distributed supports the following export destinations:

- Files (most common file formats supported)
- XML (Basic and Advanced XML export)
- External databases (via ODBC)
- Microsoft SharePoint
- ERP DMS, CMS and other business applications through scriptable export
- Custom export

### Archiving and Image Export

Documents can be exported in various image formats. Documents can be prepared for archiving when converting them to Searchable PDF/PDF-A. Postponed deletion allows to delete documents only after the data is captured and transferred in the relevant business applications.

\* This feature is still under development, planned to be released in a maintenance release of FlexiCapture 10.

\*\* Verification Station Web Service API available in FlexiCapture 10 Release 1, enhanced API planned to be released in a maintenance release of FlexiCapture 10

\*\*\* Oracle Database support still under development, planned to be released in a maintenance release of FlexiCapture 10.

# Specifications and Licensing

## Specifications

### System requirements

- **PC:** Intel® Core™2 Duo/2 Quad Pentium® /Celeron® /Xeon™, AMD K6/Turion™/Athlon™/Duron™ Sempron™ 2 GHz processor or faster. Dual Core (or more) CPU for Application Server
- **RAM for stations:** 512 MB RAM for each CPU Core, not less than 1 GB
- **RAM for Servers:** 2 GB RAM for each CPU core, 4 GB for intensive processing, 2 GB for Microsoft® SQL Server
- **Operating systems:**  
**For servers:**  
Windows® Server 2003 SP2  
Windows® Server 2008 SP2  
Windows® Server 2008 R2  
**For stations:**  
Windows® XP SP3, Windows® Vista® SP2, Windows® 7

### Required external components

- Microsoft® .Net Framework 2.0 or higher
- Internet Information Server version 6, 7 or 7.5
- Crystal Reports® Basic Runtime for Visual Studio 2008 and 2010 x86 and x64
- Microsoft® SQL Server 2005, 2008 or 2008 R2
- Adobe® Acrobat Reader 9

### Input formats

BMP, PCX, JPEG, JPEG 2000, PNG, TIFF, DjVu, DCX, PDFs (including PDF/A)

### Recognition languages

Please check [www.ABBYY.com](http://www.ABBYY.com) for a full language list.

- **OCR:** 186 languages, 42 with dictionary support
- **ICR:** 113 languages
- **OMR:** Checkboxes, non-framed checkboxes, bubbles
- **Barcodes:** 1D-Barcodes including EAN, Check, IATA, UCC and UPC and 2D Barcodes including PDF417, AZTEC and Data Matrix

### Data export formats

- XLS, DBF, CSV, TXT
- Basic and advanced XML export
- Database export via ODBC
- Export to Microsoft® SharePoint 2010
- Export to backend applications via custom export scripts
- Connectors to business applications

### Image export/saving format:

- BMP, PCX, PNG, JPEG, JPEG 2000, and TIFF
- Export for archiving to PDF and PDF/A

## ABBYY FlexiCapture 10 Distributed Licensing

ABBYY FlexiCapture is sold through a network of Certified Solution Partners. The product's flexible licensing scheme allows partners to select the best pricing option for their specific project. Licensing is offered as:

### Pages per Year Licences (PPY)

FlexiCapture Distributed is available on a PPY licensing model. PPY describes the amount of pages that can be processed during a one year timeframe. Processing speed is **not limited**. Multiple processing stations and cores are allowed, which allows high-performance data capture in your enterprise.

### Add-on Stations and Modules

Additional stations for verification or scanning can be added to a licence. Add-on modules like PDF-export, additional language support for CJK, Thai and Vietnamese or data export connectors to industry-leading backend applications. are available as add-ons.

### Total Page Count Licences (TPC)

TPC project licences can be obtained as an add-on to a FlexiCapture Distributed PPY licence. TPC describes the total amount of pages that can be processed. Processing power is **not limited** when licensing on a TPC licence scheme. An installed FlexiCapture Distributed PPY licence is a prerequisite when using a TPC licence in a customer project.

## ABBYY Maintenance and Support

Purchase of Maintenance and Support is mandatory when obtaining a FlexiCapture licence. Maintenance and Support allows customers to retrieve updates, upgrade to the next version of FlexiCapture and gives a customer access to ABBYY Technical Support. Maintenance must be purchased in yearly increments. Details are outlined in the ABBYY Maintenance and Support policy.

## ABBYY Professional Services

ABBYY offers professional services to help partners jump-start their projects or provide additional expertise and support. Services include the creation of FlexiCapture document definitions, FlexiLayout development, and additional services to help partners' success in their customer projects.

## ABBYY FlexiCapture Certification and Training

To ensure the success of your projects, ABBYY offers additional training and certification programs for the FlexiCapture platform. Certification training courses are offered regularly. Please visit ABBYY's regional websites for training schedules.

**ABBYY Europe GmbH**  
Elsenheimerstrasse 49  
80687 Munich, Germany  
Tel: +49 89 511 159 0  
Fax: +49 89 511 159 59  
sales\_eu@abbyy.com  
[www.abbyy.com](http://www.abbyy.com)  
[www.abbyy.de](http://www.abbyy.de)

**Bureau France**  
33 avenue Philippe Auguste  
75011 Paris, France  
sales\_france@abbyy.com  
[www.france.abbyy.com](http://www.france.abbyy.com)

**ABBYY UK Ltd.**  
Abbey House, Grenville Place  
Bracknell RG12 1BP, United Kingdom  
Tel: +44 1344 392 610  
Fax: +44 1344 392 611  
sales\_UK@abbyy.com